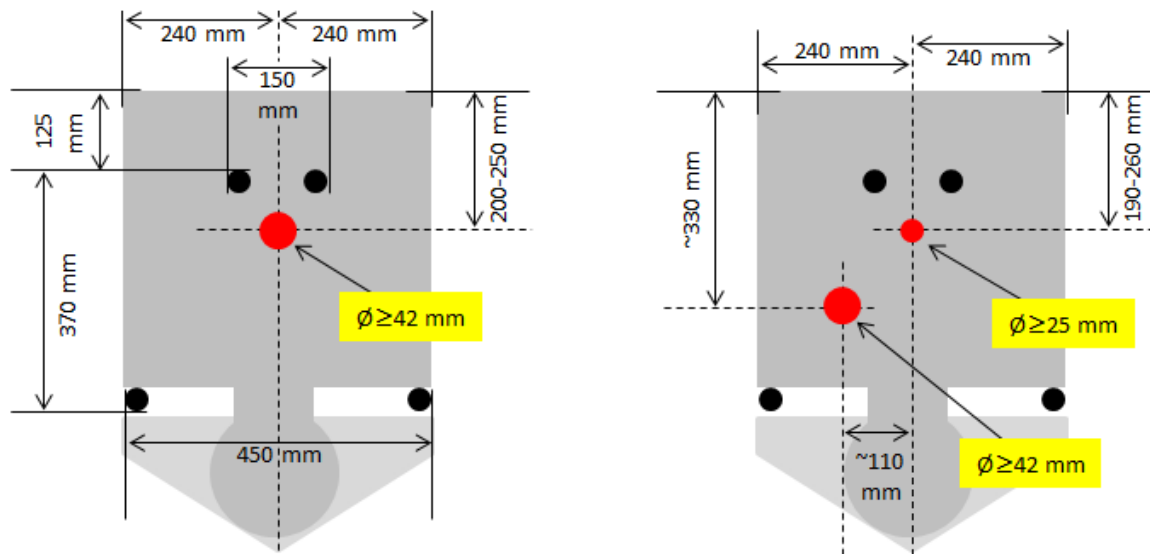


Speedster pre-installation guide

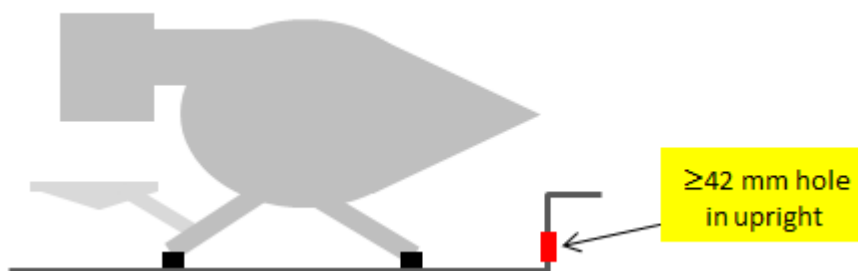
Document#	Sup-SpepIG
Date of issue	October 3, 2012
Revision date	October 27, 2014

Before unpacking the machine, you must be sure the area where the machine will be placed has been prepared properly. The **countertop** should be level and firm enough to carry the weight of the machine (up to 45 kg, 100 lbs), even when force is applied to it (to lock in the filter holders, tamp the coffee bed, etc.).

For the **feed through of the water hoses and electrical cables** drill a hole of 42 mm (1¾") diameter in the counter. This 42 mm diameter will fit the mains plug, once the mains plug is fed through, the pump plug and other feeds will fit through the same hole. The centre of the hole should be approximately in the middle of the machine and between 200 and 250 mm (8" and 10") from the back of the machine. Ensure that this hole is not above the knock-box when it is planned as a "drawer" under the countertop! See figures below for more options, see last page for details on feed trough's.



Two options for feed through (red circles) in countertop. Left: all feeds will fit through a single 42 mm hole. Right: two holes. The left is for power mains, water supply and pump cable, the right is for water discharge.



A third option is a hole in an upright behind the machine.

When the **optional steam foot-pedal** is used: There is a hole needed for the rubber tube from under the machine to the foot pedal on the ground. In the counter, the 42 mm hole can be used, but the bottom and sides of the cabinet under the counter and, if present, the plinth need to have a hole of 15 mm (⅝") diameter.



⚠ Caution!

Installation of and maintenance on the Speedster should be done by a qualified technician. Parts of the machine can reach a temperature of close to 140 °C (284 °F). The steam/hot water boiler contains water and pressurised steam of 135 °C at 1.45 Bar overpressure (275 °F at 21 PSI), temperature and pressure in the coffee system reaches up to 96 °C at 12 Bar overpressure (205 °F at 175 PSI).



Danger

We cannot be held responsible for damage and/or injuries resulting from actions performed on our machines by non-qualified personnel.

Water supply from a water treatment system must be nearby (max. 1.5 meter, 5 ft) to the machine. The water supply hose that comes with the machine has a half ball at the end and a 3/8" nut connector. **Discharge** may not be further away than 1.5 meters, have an internal diameter of at least 23 mm (1") and should be fitted out with a syphon.

There must be **space nearby** to locate the **water pump** with its electric motor (DxWxH: 30x20x25 cm; 12x8x10") and the **water treatment system** (approximately 30 cm high, 12 cm diameter; 12" high, 5" diameter).

A wall socket or **power mains** outlet box must be no more than 1.5 meter (5 ft) away. The machine is built to work with 220-240 VAC (RMS system voltage).

The 115 Volts version is built to work with 110-120 VAC. In this version, power to the steam boiler heating element is disrupted as soon as the coffee boiler heating element is switched on thus reducing the maximum power consumption.

All power mains must have an **earth connection** and should be able to safely deliver the maximum power consumption shown in the table below.

Maximum power consumption	220-240 VAC version	110-120 VAC version
Watts	3100	1700
Amps	13.5	14.8

The Speedster 220-240 VAC version may be equipped with a CEE 7/7 plug. The 110-120 VAC version comes without plug. If the machine comes without a **plug** fitted, please ensure that you have a suitable plug to match the wall socket, or have the machine directly installed in the wall installation box.



CEE 7/7 plug



Notes!

- 1 Make sure that the mains and pump cables “bend-upwards” in the cabinet below the machine to prevent the possibility that water dripping along these feeds reaches the wall socket or pump-motors.
- 2 Be aware of the location and functioning of the knock-box when planning the design of the connections to your machine.
- 3 Ensure that all the preparatory work is carried out before the machine is delivered; check power outlets, the water supply and the drains beforehand.

General tips

- When you install a knock-box in “drawer-style” locate it centred underneath the espresso machine or near the grinder(s) in the back of the bar. This will result in a favourable routing of the filter holder (knock empty, fill, tamp, lock into group).
- Have your cabinet-maker fit the knock-box “drawer-style” prior to installing the espresso machine. Whoever installs the machine may not be able or equipped to do so.
- Have approximately 10 cm of free countertop space at the barista’s side of the machine. This is useful working space for cups and saucers.
- Have a fridge installed as close to the espresso machine as possible. Cold milk is essential for the proper preparation of cappuccino.

Smallest diameters hole that will fit:

Mains power cable plug:	42 mm
Mains power cable:	12 mm
Pump cable plug:	35 mm
Pump cable:	9 mm
Drain hose:	20 mm
Water supply hose connector:	24 mm
Water supply hose:	12 mm

